



Box Bodies M.KO

Models for Success in Distribution Logistics

Contents

Schmitz Cargobull Service Portfolio

- 2 One-Stop Solution

Technology

- 4 Smart Solution: Telematics Monitors Your Freight and Trailer
- 5 TrailerConnect® Portal 2.0
- 6 Made-to-Measure Bodies
- 7 FERROPLAST® Panels

Interior Equipment

- 8 Aluminium Floor and Hygiene
- 9 Multifunctional Floor
- 10 Flexible Use of Load Securing
- 11 Double-Decker Equipment
- 12 Interior Partitioning
- 13 Brand-Name Refrigeration Units and Air Curtains

Equipment

- 14 Rear Portals and Tail Lifts
- 15 Safety on the Ramp

Distribution Trailers

- 16 M.KO/Z.KO Trough-Loading Trailer
- 17 Barrier-Free Trough-Loading
- 18 Trailer – Classic or with Central Axle
- 19 Loading from its Best Side
- 20 S.KO CITY with Steering Axle
- 21 W.KO Box Swap-Bodies

Chassis and Running Gear

- 22 ROTOS-DriveTechnology
- 23 Steel Subframes and Chassis

- 23 Contact

One-Stop Solution

At Schmitz Cargobull you get a comprehensive range of services to meet all your trailer-related needs over its entire service life. From the financing of your vehicle and on-the-road service to value retention by means of fair trade-in offers. Reduced downtime increases the availability of your trailers and guarantee their retained value. And all at low and agreed costs – throughout the service life of your trailer.



Tailored financing solutions and insurances from the industry expert

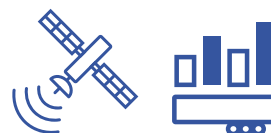


Second-hand – first-class certified-quality used trailers

Procurement

Valuation and sales

Usage



TrailerConnect® telematics for smart logistics and fleet management

24h



Original spare parts available in 24h, order online with the EPOS portal



Full Service for the trailer, refrigeration unit and tyres

24h



24h Cargobull Euroservice Europe-wide breakdown service



1,700 Service Partners – your specialist workshop for Full Service

Our Service Portfolio – Your Benefits:



- One-stop shopping: one central contact for all trailer-related issues
- 100 % Schmitz Cargobull for the entire service life of your trailer
- Service solutions from industry experts, perfectly coordinated to the Schmitz Cargobull product range
- Europe-wide service and fleet management via online portals
- Financing, Full Service, trailer telematics, second-hand trailers – individual service packages for every use
- Cost and price transparency with genuine spare parts and the highest service quality
- Reliable transport industry system partner for comprehensive transport solutions

Please refer to the Service brochure for further information.

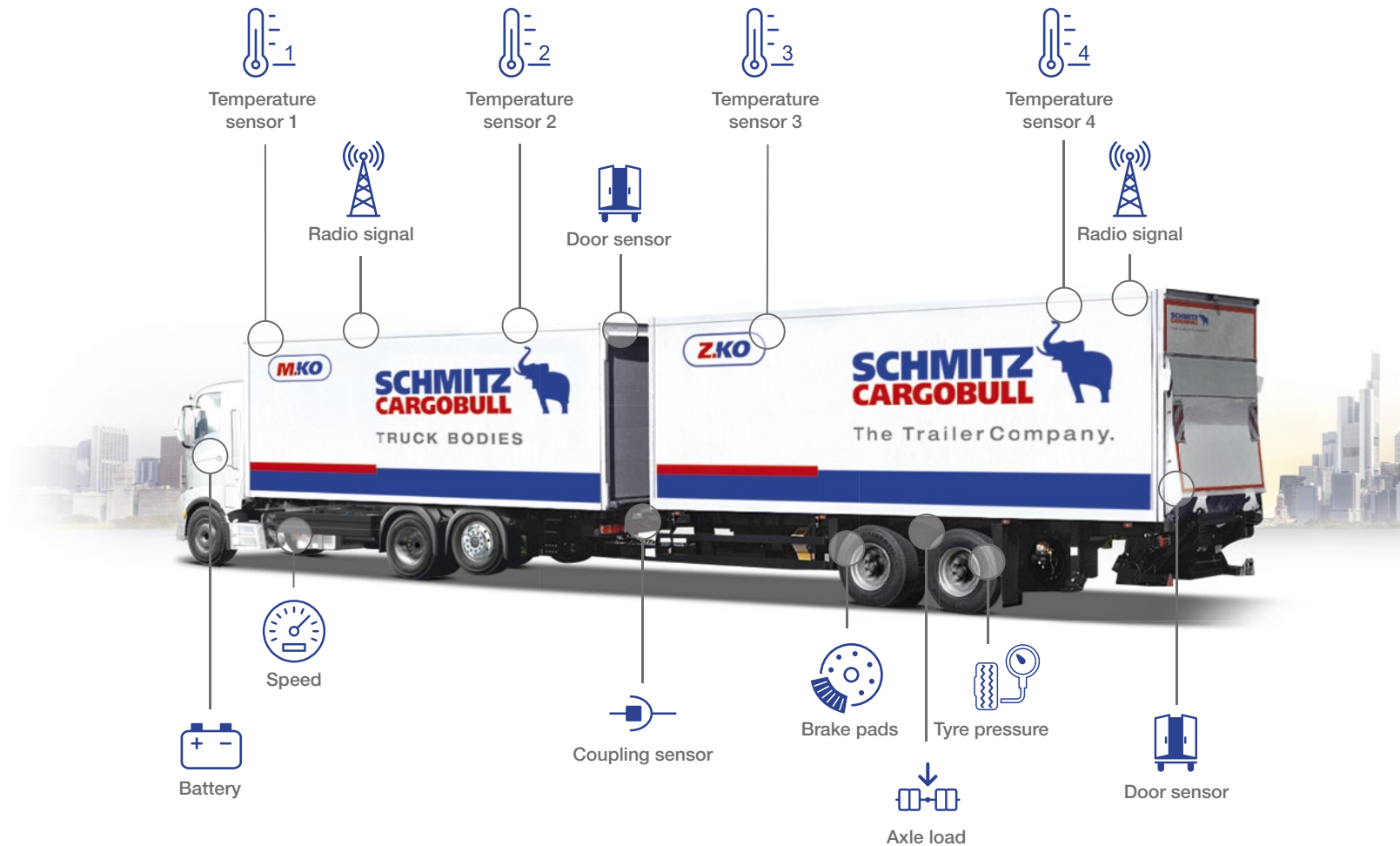


Smart Solution: Trailer Telematics Monitors Your Freight and Trailer.

TrailerConnect® documents your refrigeration data end-to-end. The trailer telematics system detects the temperature data in real time, which can then be accessed and archived at any time. The system can be configured to your specific requirements.



On your smartphone as well: the beSMART app lets drivers continuously monitor the status of the trailer and temperature-controlled freight and react rapidly when necessary. An integrated WiFi module in your trailer provides for communication between the telematics control unit and a smartphone.



Reliable monitoring: multiple sensors and a temperature recorder measure and document proof of an uninterrupted refrigeration chain. The TrailerConnect® Interface (TCI) digital temperature recorder provides for connection to the trailer telematics system.

TrailerConnect® simultaneously monitors key parameters in the refrigeration unit and trailer technology. The operating hours in the refrigeration unit are also recorded, along with the mileage and chassis status.



Please refer to the Trailer-Connect® telematics brochure for further information.



TrailerConnect® Portal 2.0

Experience your transport live. The TrailerConnect® portal 2.0 precisely provides the status of your transport and freight at a glance: real-time data, events, messages or location information. All the values are comprehensively visualised or can be filtered. PDF and Excel reports are available.

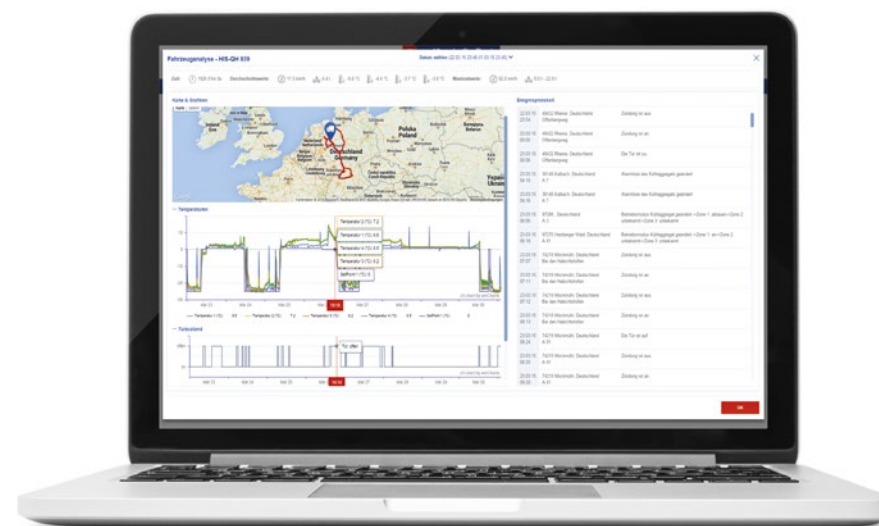
High safety standards need to be fulfilled when transporting raw materials or finished products for the pharmaceutical industry. You are quite simply qualified for these transport tasks with Pharmserv*-certified box body vehicles. The certificate encompasses all of the equipment features of an M.KO vehicle or a through-loading trailer in pharmaceutical logistics.



The conventional alternative: reliable temperature measurement equipment and documentation by a temperature recorder with an integral printer.



Up to four certified temperature sensors monitor the interior, with each one calibrated individually for each trailer.



* Pharmserv GmbH & Co. KG, Marburg, a consulting and service company for hygiene-sensitive industries.

Made-to-Measure Bodies

The challenges faced by today's distribution logistics are growing with consumers' exacting needs, in turn increasing the demands made on you by shippers, retailers and suppliers.

You need to guarantee availability, speed and flexibility in terms of delivery, naturally at the same time as meeting stringent hygiene, environmental protection and noise requirements in urban spaces.

Our modular concept lets you freely combine all the essential trailer features, as required, ensuring that you obtain the most economical solution for your transport needs. From manoeuvrable 12-tonners to load-carrying giants, and with body lengths of 6,050 to 8,900 mm we can provide you with your chosen trailer on the tractor of your choice. Our bodies can be combined with all leading manufacturers' chassis specifications.



Your Benefits:

- Customised to meet your needs with our modular product system
- Energy-efficient temperature control, thanks to our FERROPLAST® bodies and brand-name refrigeration units
- Complies with PIEK criteria for quieter handling in urban areas to prevent noise disturbances at night
- Customisable configuration of the interior layout with MultiTemp design with fixed and flexible partition walls
- Simple load securing combined with multifunctional floor, securing beams and double-decker equipment

Your service benefits:



1,700 service partners



Genuine spare parts within 24 hours*

* Applies in most European countries for spare parts available in stock (generally 95%) ** Optional.

Features

Chemicals/biological behaviour

Resistant to standard commercial chemicals, odour-neutral, resistant to rotting and decay, resistant to fungi and microbes, physiologically harmless, certified food-safe.

Corrosion resistance

Chemical and physical protection through the cathode effect with galvanised steel finishes.

Vapour-tightness

Metal cover layers are vapour diffusion-tight: no loss of insulation properties or payload through the absorption of moisture into the foam core.

Thermal storage capacity

Steel surface layers have a far lower heat storage capacity than carbon fibre: the vehicle's interior thus requires less time and energy to cool.

Insulated core

Large area foam injection results in absolute bonding with the surface layers: foam moulded density approx. 55–95 kg/m³.

Thermal expansion

The expansion coefficient of steel is approx. 50% less than with aluminium and approx. 70% less than with GRP. The folded seams completely absorb any thermal expansion, preventing any deformation.

Compression strength

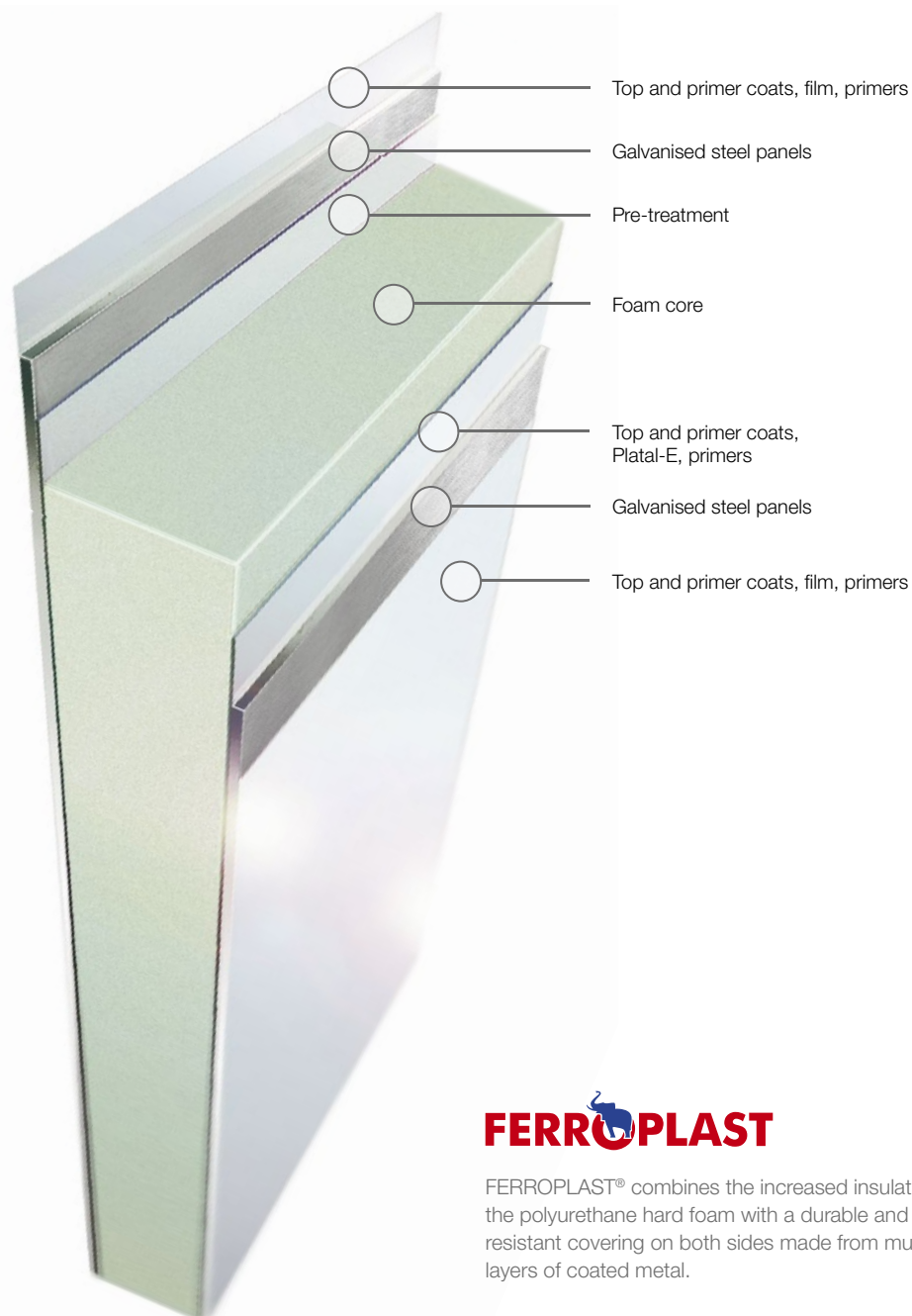
10% compression at a pressure load of 50 t/m².*

Penetration resistance

Balls with a 20 mm diameter rebound without permanent deformation with forces of up to 300 N.*

Tensile strength

320 N/mm² (StE 320).*



FERROPLAST

FERROPLAST® combines the increased insulation of the polyurethane hard foam with a durable and resistant covering on both sides made from multiple layers of coated metal.

FERROPLAST® Panels

The use of market-leading FERROPLAST® ThermoTechnology is the basis for the reliability of our refrigerated box bodies and guarantees their lasting retained value.

Vapour diffusion-tight metal cover layers prevent the absorption of moisture, thereby safeguarding the trailer's payload and preventing the insulation from losing its efficiency.

Whilst having the same inner dimensions, the foam core of metal cover layers is up to 12% thicker compared to glass fibre-reinforced plastics (GRP). Greater insulation with the same transport volume.

Optionally available: inner covering layers with High Dent Resistance (HDR) increase dent resistance and also prevent damage from rougher loads.

FERROPLAST® – The Original.

* Depending on panel thickness and material combination

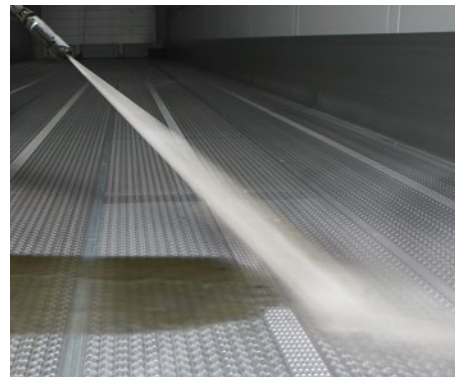
Aluminium Floor and Hygiene

The M.KO is uncompromising when it comes to hygiene for the transport of food and pharmaceutical products. Its interior meets the strict hygiene standards required by HACCP (Hazard Analysis and Critical Control Points) and IFS (International Food Standards Logistics).

Cleaning with a high-pressure cleaner is simple: a multi-layer coating protects the metal surfaces on the wall and roof. The flush-mounted fittings for the double-decker and load securing equipment are resistant to corrosion. The floor can withstand a localised load of up to 5.5 t and optionally up to 7.2 t, and is welded to the surrounding sliding plate to form a sealed tray. The precise transitions between the wall, floor pan, aluminium kick strips and grid rails enable easy, residue-free cleaning of the entire interior.



The flush recessed aluminium kick strip is welded to the floor pan. You retain the full loading width as the aluminium kick strip is recessed into the wall.



The longitudinal ribs speed up the cleaning of the interior with an multifunctional floor by up to 10 minutes.



Additional aluminium rails protect the wall from damage at any height.



A double-height sliding plate optionally provides greater protection at the base of the interior.

Your Benefits:

- 35 % longer service life compared to the standard floor*
- 10 % greater slip resistance
- 5 % lighter than a traditional barley grain floor
- PIEK-certified – lower noise emissions than the required 60 dB (A)
- Cleaning with a jet-cleaner up to 10 minutes faster, thanks to longitudinal grooves
- Five beams (each 600 daN) achieve a maximum 3,000 daN for rear load securing



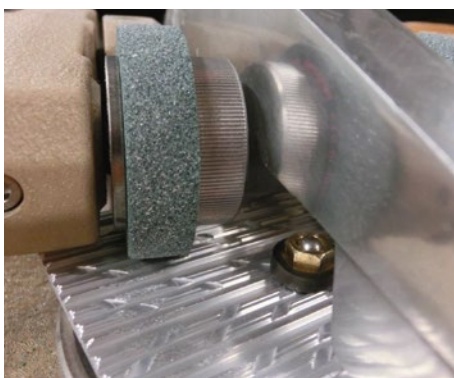
Multifunctional Floor

The multifunctional floor combines high-quality design with excellent efficiency. It is lighter than a traditional barley grain floor, but also has a longer service life, thanks to low levels of wear. The latest manufacturing processes, such as friction stir welding for seamless aluminium welding seams, provide the base for the perfect interior.

As a quiet running floor – suitable, for instance, for night-time deliveries in residential areas – it naturally meets the PIEK specifications. The special floor profile with longitudinal ribs simplifies cleaning.

The multifunctional floor is TÜV certified and provides the optimum coefficient of friction for securing palletted goods and wire baskets.

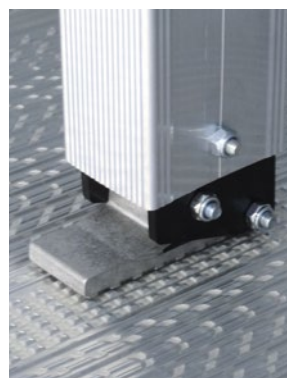
The five load securing profiles fixed into the floor speed up the fitting of vertical locking bars as well as providing increased security with flush-mounted locks for the rods in the floor and roof. Each individual clamping beam (certified by TÜV North) weighs just 7.5 kg and secures up to 600 daN.



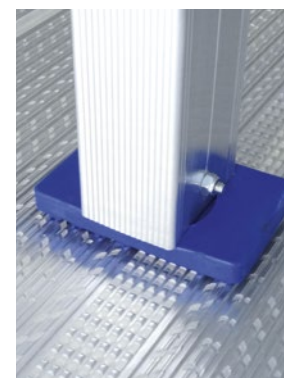
The Taber test uses a rotating abrasive roller to test wear resistance.



Durable, slip-resistant and easy-clean – coupled with integral load securing.



The clamping beam foot sits form-locked in the continuous grid profile in the floor and is optimised for increased load capacity.



* Result of abrasion resistance analysis in the Taber test 2/2015.

Flexible Use of Load Securing

The many load securing options enable the freight to be secured at every point in the body, while part loads are efficiently secured in conjunction with horizontal load securing beams and vertical telescopic beams. Airline rails in the floor and roof increase the load-bearing strength of vertical telescopic beams.



Vertical telescopic beams with special feet for load securing on the multifunctional floor.



Easily accessible and simply secured until needed – side locking bars.



The flush-mounted locks of airline rails in the roof and floor simplify load securing with vertical telescopic beams.



When not in use, the load shift protection beams are secured at the side on the wall.



The flush-fit load securing rail runs continuously along the entire interior length, if required, permitting the custom positioning of the load shift protection beams.

Meat Hanging Systems



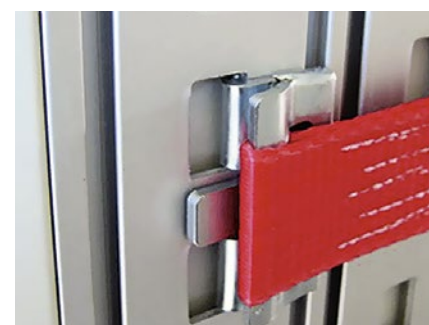
Meat hanging system designed as a bi-rail system for use in the West European economic region.



The Euro meat rack comprises five galvanized tubular rails with a hook stop lock system and a parking rail for empty hooks.



All key data on the capacity and durability of the load securing system at a glance – markings on each beam.



Special lashing straps can be used for the double-decker rails.

Double-Decker Equipment

Ideal for non-stackable goods: the double-decker loading system provides for the seamless loading of Euro pallets at two adjustable height levels, doubling the number of your pallet spaces. With a 1,000 kg load-bearing capacity per bar with an 8 kg empty weight, the payload thus remains virtually unchanged.

Simple operation: the beams are infinitely adjustable and one person can fit and adjust the height with ease. They are quickly locked under the roof for high pallets – with space for the ventilation ducts.

Your Benefits:

- Twice the number of pallet spaces with a second level
- The height of the 2nd level can be adjusted as required – with a load-bearing capacity of 1,000 kg per bar.
- Easy and fast handling with double-decker bars
- TÜV-certified load securing system with the double-decker system: the freight can be positively locked using three beams with 9,000 daN

Interior Partitioning

When it comes to the interior, the focus is on the perfect layout for your transport work. MultiTemp equipment increases the efficiency of refrigerated trailers, as each chamber can be set to exactly the right temperature for the freight being carried. The additional refrigerated zone works with its own roof evaporator.

Our fittings enable you to specifically equip your box body for these tasks. Divide up the space as you need it. Choose between fixed and mobile units.



The longitudinal wall, with its variable end piece, extends the partition wall to the rear of the trailer, if required. Or it can be used as a door to seal the MultiTemp chamber, preventing temperature exchange between the temperature zones.



The side door enables partial unloading and access to the individual MultiTemp refrigeration zones.



Movable partitions create multiple separate temperature zones and can be moved lengthways within the trailer to create a flexible interior layout.



Lightweight plastic partition walls aid handling in the compact chambers.



The energy-saving LED lights provide improved interior lighting.



It's your choice: brand-name refrigeration units from leading manufacturers on the front wall.



A high-performance alternative to bulkhead equipment – underfloor brand-name refrigeration units.



Brand-Name Refrigeration Units and Air Curtains

Food transport demands responsibility to suppliers, customers and consumers. It begins with high-performance refrigeration of the cargo space using brand-name refrigeration units. Top refrigeration machines from leading manufacturers are used, which are economical and quiet. This ensures you always benefit from state-of-the-art technology.



Order low-emission and quiet PIEK-certified refrigeration units on request.



Several evaporators in the interior for trailers and MultiTemp trailers.



Loading processes at normal outside temperature are generally the order of the day in distribution. However, the loss of refrigerated air through open doors costs more than just a lot of energy. In the worst case, compliance with the refrigeration chain is sensitively disrupted by this as the temperature in the body rises.



Variably movable strip curtains in the interior reduce temperature equalisation with partial unloading.



Transparent strip curtains at the rear of the trailer minimise unwanted air exchange.



Unrestrictedly effective during handling – a powerful fan on the roof creates a curtain of air to prevent the loss of cold air.

Plastic or air curtains at the rear of the trailer prevent the exchange of air and thus also the loss of refrigerated air, improving more than just load safety. You also save energy because the refrigeration unit uses less fuel to cool down the body to the setpoint temperature.

Rear Portals and Tail Lifts

Tail lifts enable goods to be loaded without the need for ramps or forklift trucks and are ideal for comprehensive deliveries to retailers and discount stores. We offer a wide range of brand-name products with a range of features, such as foot switch control on the lifting platform.



Roller shutters at the rear and on through-loading trailer bridges are the optimum solution for narrow manoeuvring areas.



Reliable: sturdy tailgate doors made of theft-proof FERROPLAST® with four espagnolettes.



Three-door rear portal with central door specifically designed for partial opening to reduce the loss of cold air during loading and unloading.



Tail lifts designed as an insulated tail lift flap speed up loading and unloading by providing direct access to the freight.



Insulated tail lift combined with a flap on the top of the body replaces the two-door tail end portal.



Tail lift folded in front of the rear. The doors of the rear portal are partially covered.



The trailer can be docked directly onto the ramp's temperature-controlled apron without the loss of temperature, thanks to the retractable tail lift.



A video camera at the rear makes manoeuvring and docking procedures safer. A stainless steel guard protects the camera.



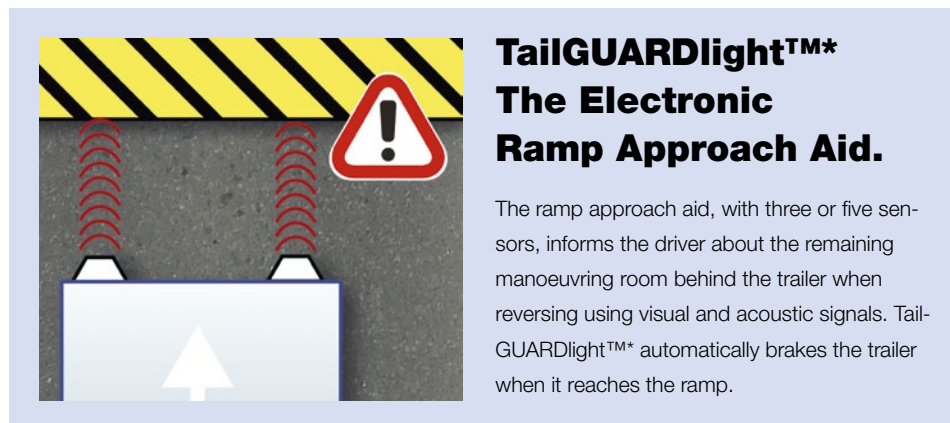
Compressible rubber roller bumpers protect the rear and even out any differences in level between the trailer and ramp.



The SL2 rear safety light makes it clearly visible that the trailer is braking, even from a long distance and can be ordered in conjunction with navigation, braking and indicator lights.



The roller bumpers on the corners of the rear frame absorb massive amounts of energy before your vehicle comes into contact with the loading dock. This solution prevents damage to your trailer and the load and simplifies backing up to the ramp.



TailGUARDlight™* The Electronic Ramp Approach Aid.

The ramp approach aid, with three or five sensors, informs the driver about the remaining manoeuvring room behind the trailer when reversing using visual and acoustic signals. TailGUARDlight™* automatically brakes the trailer when it reaches the ramp.

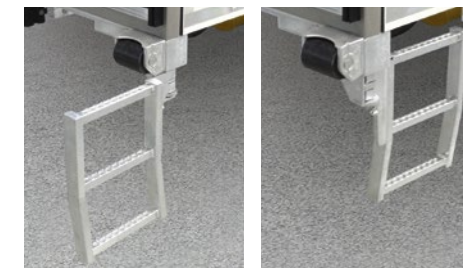
* Optional equipment. TailGUARDlight™ is a registered trademark belonging to WABCO Fahrzeugsysteme GmbH. ** Optional.

Safety on the Ramp

Accidental damage on the ramp continues to be a major risk for box body vehicles, and can even cause lasting damage to the body. With TailGUARDlight™* and compressible roller bumpers you can make your approach safely, even when under time pressure.



Additional reversing and side lights with LED technology for enhanced safety at work.**



Practical: the twist-out ladder simplifies climbing into the trailer when combined with a tail lift at the rear of the trailer.

M.KO/Z.KO Through-Loading Trailer

You can achieve more rapid loading and departure thanks to our stacker-accessible through-loading vehicles.

You save time: the truck box is loaded and unloaded directly via the trailer. No need to hitch and unhitch the trailer, easy manoeuvring with the entire trailer and thus the added benefit of less risk of damage.

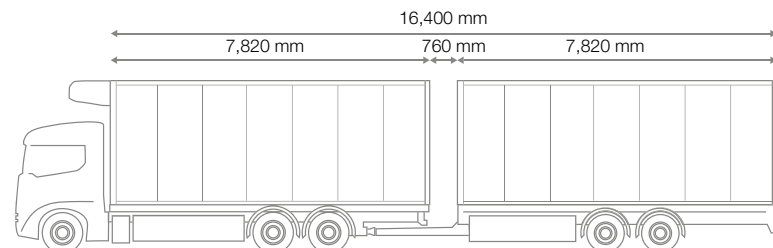
You save space: the refrigerated warehouse has an unlimited number of loading bays. Find a slot more quickly with only one unit to manoeuvre.



Your service benefits:



Monitor your vehicle and freight with
TrailerConnect® telematics



M.KO	7,820 mm	7,990 mm	8,290 mm	8,900 mm
Z.KO	7,820 mm	7,640 mm	7,290 mm	6,740 mm

Four combination options:
select the optimum length partition for your business.

Your Benefits:

- Load and unload in one movement without the need for coupling manoeuvring with the trailer
- Up to 38 Euro pallets on one level
- Complete flexibility thanks to the retractable tail lift
- MultiTemp transport with a movable partition wall
- Full-length fork-lift access with 5.5 t or 7.1 t stacker axle load
- Fast, perfectly hygienic cleaning



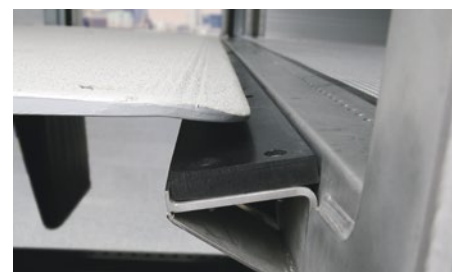
Fast protection against sunlight, snow and rain: the lightweight roller blind over the bridging area reduces the impact of the weather.



The folding tunnel effectively secures the transition between the truck and the trailer against cooling loss and the weather.



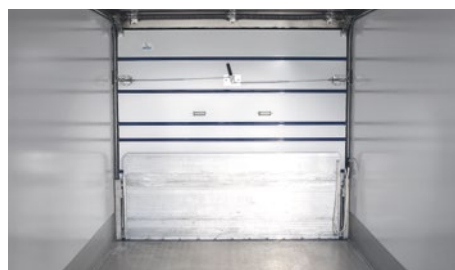
The sturdy stainless steel bridge connects the truck box and trailer box during loading.



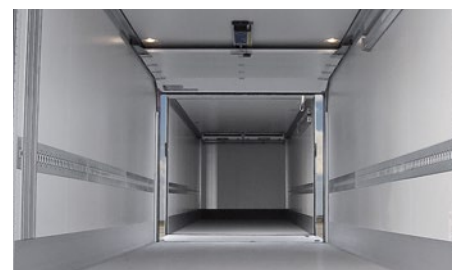
Stainless steel straddle nose with sound-damping rubber supports.



Perfectly prepared: trailer coupling and connection panel with DuoMatic quick-release coupling for trailers.



Space-saving at the front of the trailer: front wall with roller shutter and folding straddle plate.



Load up to 38 pallets at once: the through-loading trailer provides optimum access without unhitching.

Barrier-Free Through-Loading

Rapid through-loading with minimum refrigeration loss: Our special trailer features a roller shutter on its front side. The tail lift platform on the truck box creates a stacker-accessible bridge. A weather protection roller blind also protects the goods against rain and sun.



Front of the central axle trailer Z.KO with double folding doors and four espagnolettes. (optionally with roller shutter)

Trailer – Classic or with Central Axle

Superiority on the road: the classic trailer offers outstanding handling and safety even with uneven loads.

Central-axle trailers stand out on account of their optimum space capacity as an alternative to traditional trailers. With just under 0.75 m spacing from the truck, the statutory maximum permitted system length is available as loading capacity. That equates to 38 pallet spaces – five more pallets than in a semi-trailer.



Full use of space: low-coupled central-axle trailer with underfloor refrigeration unit. The central-axle trailer is also highly manoeuvrable, with the special axle alignment simplifying manoeuvring when reversing.



Front landing gear and adaptable central rigid drawbar on the Z.KO.



Rear landing gear and control panel for the MRH pneumatic suspension (Multi Ride Height).



Our classic trailers are synonymous with ease of dispatch and load-independent driving stability.



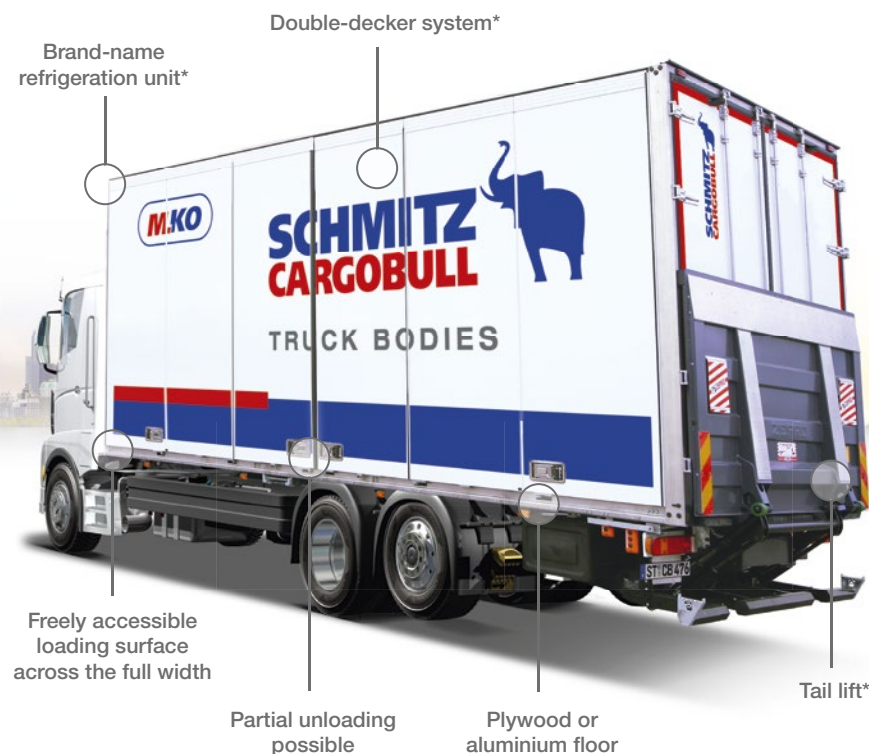
Pneumatic and electrical connection panel located centrally underneath the drawbar.



A.KO trailer for temperature-controlled freight with a bulkhead refrigeration unit.



Full capacity – even when transferring pallets: A.KO with pallet boxes.



Available as a refrigerated box body or for dry freight

Loading from its Best Side

Box bodies with a folding wall enable flexible loading and unloading from the side, even along the entire length of the cargo area – just like a curtainsider trailer. The folding wall doors can be opened individually, making them ideal for partial unloading. This protects the rest of the cargo against damage from extreme weather conditions.

The folding wall is available for the M.KO EXPRESS with a plywood floor and also for the M.KO COOL with a refrigeration unit and aluminium floor.



Practical clamping rails for freely positionable, self-clamping load securing belts at the top and the bottom on the out of frame.



Side loading and unloading along the full length or from the rear using the tail lift.



Three side doors are folded together and secured at the corners.



Optionally also available with refrigeration unit and circulation profiles on the front wall.

*Optional.

S.KO CITY with Steering Axle

Our one-, two- or three-axle S.KO CITY with mechanical forced-steering lets you handle narrow roads, access roads and loading yards without losing time. Manoeuvre the agile semitrailer safely to your destination.

The highly insulated, hygienic and easy-clean FERROPLAST® box creates premium conditions for effective refrigerated and fresh produce logistics over short and mid-range distances.



Lengths from 9,000 up to 13,410 mm

Highly rigid FERROPLAST® body (page 7)

PIEK standard*



Agile manoeuvrability

Forced steering

Tail lift*

Your service benefits:



Full Service contract for trailer and tyres

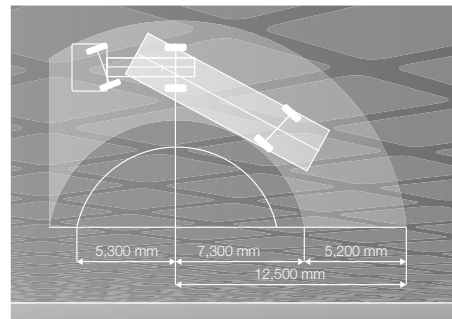


Financing including services such as Full Service and telematics

ROTOS running gear (page 22)

Your Benefits:

- Urban logistics equipment with tail lift and steering axle
- Simplified load securing: box body with up to 32 tonne side wall strength
- Refrigeration unit and PIEK standard-compliant aluminium quiet running floor*
- Liquid-tight welded floor pan for time-saving cleaning



S.KO CITY with force-guided steering axle: compared with a rigid axle, the co-steering truck-trailer combination is considerably easier to manoeuvre.



The folding circulation wall in front of the refrigeration unit optimises the air flow and simplifies hygiene.



The space-saving retractable tail lift enables the trailer to dock perfectly with the ramp.



W.KO Box Swap-Bodies

The long service life with consistently high insulation coupled with the perfect protection of your freight against external influences and theft-proof features: W.KO box swap-bodies systematically make use of the cost-effective benefits of FERROPLAST®. Our modular box system gives you the perfect equipment for refrigerated and cooled transport, courier express services, trade fair logistics and multimodal rail transport. The options include refrigeration units integrated into the box exterior, rail-approved roller shutters, load securing and double decker loading systems.

Swap bodies offer efficiencies: instead of losing time when loading and unloading, swap-bodies can immediately be swapped for a delivery-ready unit. The exchange of swap-bodies is ideal for freight which is transported as a unit along drop-and-swap routes across multiple carrier hubs, shortening the route times per driver and preventing empty runs.

Your Benefits:

- High-quality transport of dry, refrigerated and fresh goods
- Excellent availability, ease of cleaning, minimal maintenance
- Low Total Cost of Ownership (TCO), thanks to FERROPLAST® Thermo-Technology
- Extremely easy to repair in the event of damage
- Modular system for application-specific trailer equipment



The supporting legs, which comply with DIN EN 284, can be folded through 90° in a longitudinal direction, pulled out to the side and prove themselves with their robust design. Thanks to this they can withstand rough handling during fitting and dismantling.

*Optional.

ROTOS DriveTechnology

Our ROTOS axle units provide outstanding road handling combined with uncompromising availability. The extremely low-vibration axle solely consists of well-known brand-name manufacturers' components.

MRH pneumatic suspension

The best road contact in every situation: MRH pneumatic suspension (Multi-Ride-Height) protects the load and vehicle, enabling the loading height of your vehicle to adapt automatically to different ramp heights.

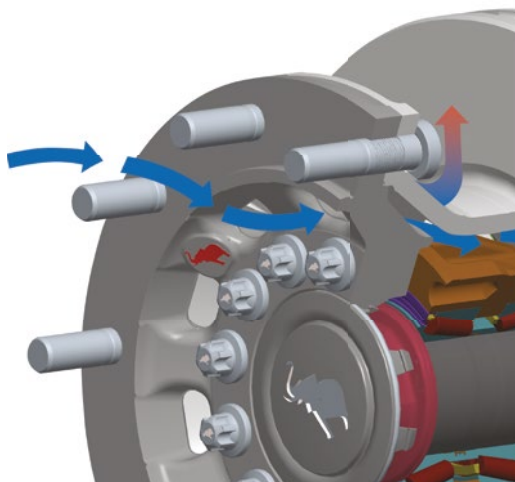


Please refer to the ROTOS brochure for further information.



See the video at YouTube. ROTOS. The running gear.

Innovative ventilation system: air in the axle hub is drawn in from the outside past the hub, and directed both onto and into the brake disc, refrigerating the brakes and wheel bearings. Your benefit: The brake performance remains reliable, even during constant operation, and the brake pads last longer.



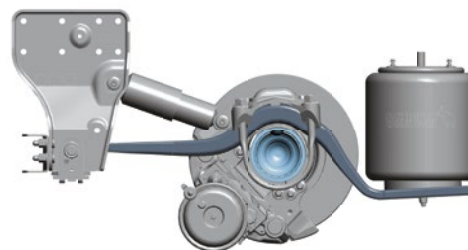
22.5" axle hub: 430 mm diameter brake discs for maximum performance of the standard and HD running gear



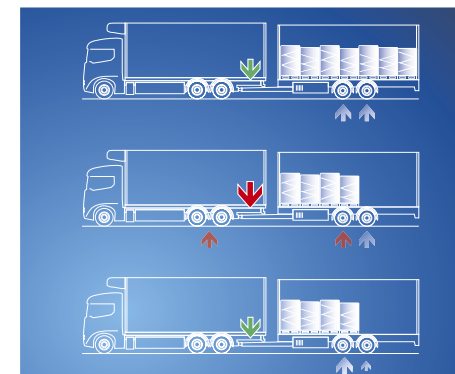
19.5" axle hub**: 370 mm diameter brake disc for weight optimisation and low cross-section tyres

ROTOS running gear is equipped with MRH (Multi Ride Height) pneumatic suspension as a standard feature

Running gear
Warranty
1,000,000 km
or 6 years*



Long spring travel and the precise reaction of the MRH pneumatic suspension protect both the load and the trailer.



The dynamic Axle Load Program (ALP) works with the central axle trailer Z.KO running gear. The specific lowering of the bellows pressure within the two chassis axles automatically moves the centre of gravity of the load in accordance with the load in the trailer, equalising the pressure on the trailer tow-bar and noticeably improving road holding.

Your Benefits:

- Less heat generation results in greater brake performance
- Maintenance-free wheel bearings save costs
- Lower weight of the unsprung mass gives better vehicle handling
- The ability to adjust the trailer height to loading ramps provides greater flexibility
- Standard driver assistance systems improve safety

* Excluding wear parts. Guarantee meets the requirements for on-road use.
**Optional.

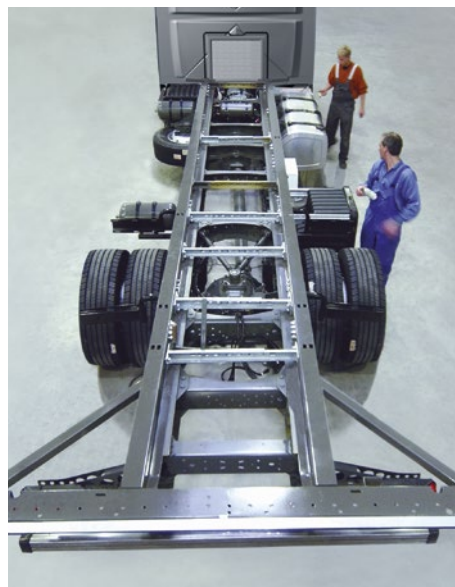
Production Facilities in Toddin (DE) and Panevežys (LT)



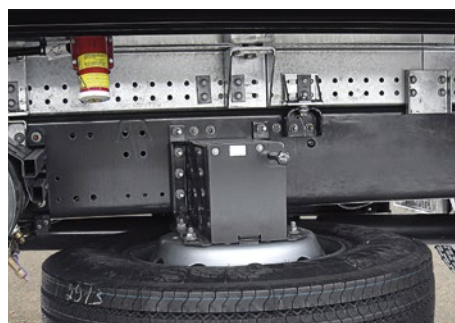
Box vehicles for delivery transport from Toddin – Two decades of guaranteed first-class quality our customers can depend on.



Individual customer solutions in series production: the assembly line in the Baltic city of Panevežys.



The galvanized subframe perfectly meets truck manufacturers' precise specifications.



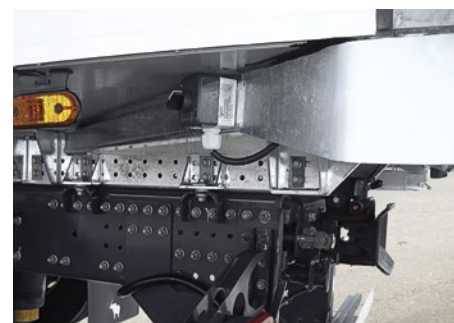
The finely-adjusted hole patterns in the frame guarantee the force-locking connection of the body to the manufacturer-specific and vehicle-specific mounting points.

Steel Subframes and Chassis

Our galvanised and bolted subframe is compatible with all brand names. You can therefore combine our boxes with trucks manufactured by all truck manufacturers, including DAF, IVECO, MAN, Mercedes-Benz, Renault Trucks, SCANIA and VOLVO.

Bolted designs are easy to repair in principle. The detachable connections enable the components to be easily and individually replaced, lowering the cost of maintenance and repair.

The frame and chassis are galvanised with increased protection against chipping by stones and ten years guarantee against rusting.



Diagonal corner reinforcements from the rear to the subframe stabilise the body against deformation when approaching the ramp.

Schmitz Cargobull Sales Germany:

Schmitz Cargobull AG
Bahnhofstraße 22
D-48612 Horstmar, Germany
Phone: +49 (2558) / 81-7001
Fax: +49 (2558) / 81-91279
E-mail: vertrieb.deutschland@cargobull.com
Web: www.cargobull.de

Schmitz Cargobull Sales Austria:

Schmitz Cargobull Austria GmbH
Bayernstraße 54
A-5071 Wals-Siezenheim, Austria
Phone: +43 (662) 881587-0
Fax: +43 (662) 88158715
E-mail: vertrieb@cargobull.at
Web: www.cargobull.at

Schmitz Cargobull Sales Switzerland:

Schmitz Cargobull Schweiz AG
Höchmatt 7
CH-4616 Kappel SO, Switzerland
Phone: +41 (62) 959 50 50
Fax: +41 (62) 959 50 60
E-mail: info@cargobull-schweiz.ch
Web: www.cargobull.ch

SCHMITZ
CARGOBULL 
The Trailer Company.



Find out more at:
www.cargobull.com



Schmitz Cargobull AG · Bahnhofstraße 22 · D-48612 Horstmar, Germany · Phone +49 2558 81-0 · Fax +49 2558 81-500 · www.cargobull.com